

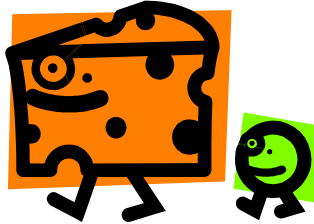
Issue 15 : November 2015

In this edition.....

Welcome from Brian
Medical Detection Dogs
Good Practice Award
Future Events

Thame Show Report
Member's Survey
The Prof on form!

Welcome from Brian



A warm welcome to all members. As the year draws to a close (yes, only six weeks to Christmas!) It's worth reflecting on all that we have done this year. As well as raising awareness and raising money we have introduced some new events, and we would value your feedback on what else we could be doing – see the article on the survey.

Thame Show Report



Another successful day at Thame show saw the crowds flocking in and a lot of interest in our stand. Our volunteers were on hand again to meet the public, answer questions, and help

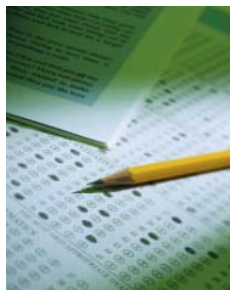
people who wanted to know more about symptoms, diagnosis and treatment. It certainly helps holding the event on the traditional Thursday in September, as we found many more people visiting the stand. You can see three of our intrepid volunteers on duty in the picture. Many thanks to all of those who helped out on the day.

Medical Detection Dogs

Last month we took a group of members and partners to the Medical Detection Dogs facility at Great Horwood, near Milton Keynes. This was in conjunction with members from the Milton Keynes group. If you have ever wondered how dogs can sniff out cancer then this visit ticked all the boxes. A wonderful facility, with dedicated staff and happy dogs, we were impressed with what the dogs could detect. There is a lot more to the facility than just detecting prostate cancer, and those who want to know more should visit www.medicaldetectiondogs.org.uk. We were fortunate enough to see the dogs in action and a visit is well recommended. We were able to make a donation to the organisation and here is Brian presenting our cheque for £250 to Dr Claire Guest, the CEO of Medical Detection Dogs.



Member's Survey



Some of you may remember three years ago we conducted a survey of our members to solicit views on the future direction of our group, what we should focus on and how we should organise ourselves. As good practice, we are now surveying our members three years on to ask what more we should be doing to help raise awareness and to help each other, and more specifically how we should spend the money that came to us as a result of the summer concert. Please look out for the survey coming to you in the post. This time round, Esther Davidson, wife of member John Davidson has kindly agreed to help with the survey, so you will be sending your completed surveys back to her. Many thanks Esther!

Good Practice Award

We strive to make our support group as effective as possible and to this end we recently had a visit from Prostate Cancer UK, to whom we are affiliated as a partner group. They wanted to see how we operate. The really good news is that they are happy to award our group a good practice award if we implement a couple of improvements. One is to do with data privacy and the other is having a home visit policy in place. We are currently working on these and hope to report more about this award in a future edition of the newsletter.



The Prof on form!



For those of us who braved a chilly and wet October evening at Stoke Mandeville we were treated to a masterclass in prostate cancer diagnosis and treatment by Professor Peter Hoskin from Mount Vernon. As a regular speaker to our group Peter Hoskin gave a fascinating insight into the latest developments and spent time answering questions on a whole host of topics. Watch this space for our next speaker!

Upcoming events



Make a note in your diary now of two key dates

Tuesday 24th Nov 7-10pm

Wednesday 16th Dec 12noon

*Autumn Quiz, The Chandos Arms
 Lunch party, Brian & Hazel's*

Brian

Roger

Chairman: Brian Cole, Willow Bank, Station Road, Haddenham, Aylesbury, Bucks, HP17 8AN. Tel. 01844 291876 Email : jbcouleuk@aol.com

Secretary: Roger Wotton, Vine Cottage, Chesham Road, Wigginton, Tring, Herts, HP23 6HG. Tel. 01442 822161 Email : rwotton@btconnect.com